




# CATALOGUE

**Workwear mit Haltung.**  
Fair. Stilvoll. Nachhaltig.

**Join the club!**  
Be #partofthedifference

**kaya-kato.de**



We recycle ocean plastic.  
We are transforming the textile industry.  
Fair, transparent, limitless.

JOIN THE CLUB.  
BE #PARTOFTHEDIFFERENCE

## CONTENTS

|    |   |
|----|---|
| 06 | <b><u>MATERIALS</u></b>                   |
| 08 | <b><u>CLOSED LOOP RECYCLING</u></b>       |
| 12 | <b><u>CHEF JACKETS &amp; SHIRTS</u></b>   |
| 20 | <b><u>CORPORATE WEAR</u></b>              |
| 28 | <b><u>CHEF &amp; SERVICE TROUSERS</u></b> |
| 32 | <b><u>APRONS</u></b>                      |
| 50 | <b><u>HEADWEAR</u></b>                    |
| 52 | <b><u>MEDICINE &amp; CARE</u></b>         |
| 54 | <b><u>MAX STROHE COLLECTION</u></b>       |

# BEING PART OF THE DIFFERENCE

With KAYA&KATO, you're not just wearing workwear – you're making a statement. For more sustainability, fair production conditions, and a look that combines style and responsibility. Our workwear is more than just functional – it tells a story.

We produce exclusively with sustainable materials, including organic cotton from farmer cooperatives in Uganda and polyester made from recycled ocean plastic. Every piece of our clothing represents a conscious approach to resource use and a supply chain that is transparent and fair – from raw material sourcing to the finished jacket, apron, or pants.

Our workwear is produced under socially fair conditions, and all resulting CO<sub>2</sub> emissions are fully compensated. Our high standards are not just a promise – they are tested and certified:

KAYA&KATO carries the **Green Button**, the **GOTS** certification (Global Organic Textile Standard), the **Global Recycled Standard**, as well as the **OEKO-TEX 100** and **OEKO-TEX MADE IN GREEN** certifications, among others. These certifications guarantee that our products are manufactured fairly and in an environmentally friendly way – without compromise.

But for us, sustainability is more than just materials and production. It's about individuality. That's why we offer **Customized Collections**: tailor-made designs that perfectly match your concept and team. Together, we create workwear that reflects your values – from unique colors and cuts to exclusive embroidery and logos.



Certified by Ecocert Greenlife 176613



We are certified to the Global Recycled Standard, which certifies and tracks recycled polyester from the source to final product. Certified by EGL 176613 | shorturl.at/avHX5



KAYA&KATO X MAX SIMONE

## THE GOOD STUFF



### RECYCLED POLYESTER

**Recycled polyester** is made from existing plastics such as PET bottles, reducing both petroleum consumption and plastic waste. It retains the same durable properties as new polyester and withstands even intensive industrial washing. Our „Clean Ocean“ collection utilizes recycled PET bottles from both the ocean and land, actively contributing to ocean cleanup.

#### Properties

- Durable, long-lasting, industrial-washable.

#### Sustainability

- Reduces petroleum consumption and plastic waste.
- Helps clean up the oceans.



### ORGANIC COTTON

**Organic cotton** is grown without synthetic pesticides or fertilizers, preserving soil, water, and the environment. It is particularly skin-friendly and is often produced under fair conditions, promoting social justice. Our collections made with organic cotton are **GOTS-certified**, ensuring the highest ecological and social standards.

#### Properties

- Skin-friendly, soft, and comfortable to wear.

#### Sustainability

- Preserves soil and water.
- Promotes social justice through fair production.



### LYOCELL

**Lyocell** is a sustainable cellulose fiber derived from wood, produced in a closed-loop process with minimal resource consumption. Our **TENCEL™ lyocell** from Lenzing comes from **FSC- and PEFC-certified forestry**, combining environmental friendliness with high breathability and comfort. In our collections, we use it as a blended fabric with recycled polyester.

#### Properties

- Soft, breathable, moisture-regulating.

#### Sustainability

- Produced in a closed-loop process with minimal resource consumption.



### ELASTOLEFIN

**Elastolefin** ensures durability, shape retention, and high wearing comfort in workwear, even after numerous industrial washes. New recycling technologies make it possible to recycle elastic fibers without compromising the sustainability of textiles. Our partner **Xalance** produces elastolefin in an environmentally friendly way — **without harmful solvents and using energy from renewable sources**.

#### Properties

- Stretchable, shape-retaining, durable, comfortable.

#### Sustainability

- Recyclable without loss of quality.
- Produced using renewable energy.

## CLOSED LOOP RECYCLING – WORKWEAR WITH NO EXPIRATION DATE

Imagine your workwear never ends up in the trash but is transformed into new garments—again and again. That’s exactly what we make possible with our Closed Loop Recycling! Worn-out textiles are recycled, turned into high-quality fabrics, and reintroduced into the production cycle as new collections. No waste, no excess—just pure sustainability.

### Why is this a gamechanger?

Because we’re rewriting the rules of the industry! While others rely on disposable fashion, we create workwear that’s not only durable but also fully recyclable. This is how we make sustainable workwear truly future-proof—because responsibility doesn’t stop at the sale.

**#BEINGPARTOFTHEDIFFERENCE**



# OUR WORKWEAR

Get inspired



## CHEF JACKETS & SHIRTS



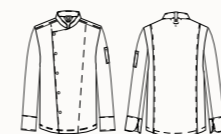
### RIVOLI

**Chef Jacket, unisex**  
SKU: 20022201

**Material**  
100% cotton (organic),  
according to GOTS, 229 g/m<sup>2</sup>.

**Washability**  
Washable up to 60°C and suitable for  
dry cleaning.

**Colors**  
■ natural



### SOROTI

**Chef Shirt, unisex**  
SKU: 20082111

**Material**  
100% cotton (organic),  
according to GOTS, 215 g/m<sup>2</sup>.

**Washability**  
Washable up to 60°C and suitable for  
dry cleaning.

**Colors**  
■ natural



### LIRA

**Chef Shirt, Ladies**  
SKU: 21052111

**Material**  
100% cotton (organic),  
according to GOTS, 215 g/m<sup>2</sup>.

**Washability**  
Washable up to 60°C and suitable for  
dry cleaning.

**Colors**  
■ natural





Ball Buttons are available separately – optionally in white or black.

### RUBANO

**Chef Jacket, unisex | SKU: 20042101**

**Material**

White twill made of 65% polyester (recycled) and 35% cotton (organic), 210 g/m<sup>2</sup>.

**Washability**

Washable at up to 70°C, tumble dry, suitable for industrial washing according to DIN EN ISO 15797.

**Colors**

white



### ROVATO

**Chef Jacket, unisex | SKU: 20012112**

**Material**

Body made of 50% cotton (organic) and 50% recycled polyester.

**Washability**

Washable at up to 70°C, tumble dry, suitable for industrial washing according to DIN EN ISO 15797.

**Colors**

sand



**ⓘ** Minimum order quantity required. Please inquire.

### ROMA

**Chef Jacket, unisex | SKU: 20012352**

**Material**

Denim made of 100% cotton (organic), according to GOTS, 220 g/m<sup>2</sup>.

**Washability**

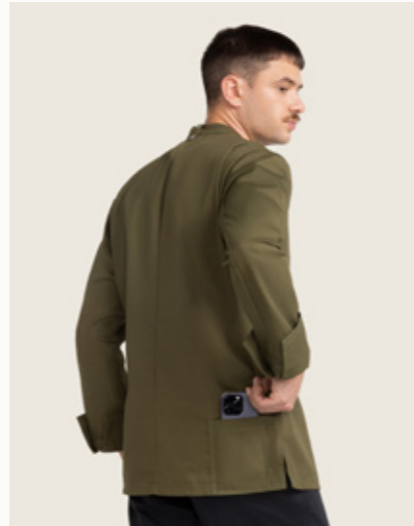
Denim is usually pre-washed, but to maintain sustainability, this product is not. Slight variations in color and texture after washing are normal. Wash only with similar colors! Washable at up to 40°C and suitable for tumble drying.

**Colors**

denim blue







**RAY 2.0**

Chef Jacket, unisex | SKU: 20012100

**Material**

Twill made of 65% polyester and 35% cotton (organic), 240 g/m<sup>2</sup>. The polyester is composed of 40% recycled polyester and 25% polyester SEAQUAL® YARN (contains upcycled marine plastic).

**Washability**

Washable at up to 70°C, tumble dry, suitable for industrial washing according to DIN EN ISO 15797.

**Colors**

■ anthracite | ■ denim look | ■ navy | ■ olive | □ white | ■ black ⓘ



ⓘ Minimum order quantity required. Please inquire.



**ROHU**



Chef Jacket, Ladies | SKU: 21012100

**Material**

Twill made of 65% polyester and 35% cotton (organic), 240 g/m<sup>2</sup>. The polyester is composed of 40% recycled polyester and 25% polyester SEAQUAL® YARN (contains upcycled marine plastic).

**Washability**

Washable at up to 70°C, tumble dry, suitable for industrial washing according to DIN EN ISO 15797.

**Colors**

■ anthracite | ■ denim look | ■ navy | ■ olive | □ white



**OYSTER**

Chef Jacket, unisex | SKU: 20011100

**Material**

Twill made of 65% polyester and 35% cotton (organic), 240 g/m<sup>2</sup>. The polyester is composed of 40% recycled polyester and 25% polyester SEAQUAL® YARN (contains upcycled marine plastic).

**Washability**

Washable at up to 70°C, tumble dry, suitable for industrial washing according to DIN EN ISO 15797.

**Colors**

■ anthracite | ■ navy | □ white



## CORPORATE WEAR

**MALOJA**

Blouse, Ladies | SKU: 31061301

**Material**

100% cotton (organic), 140 g/m<sup>2</sup>.

**Washability**

Washable at up to 60°C, tumble dry, can be dry cleaned.

**Colors**

white |  greyblue |  black <sup>Ⓢ</sup>

**LUZERN**

Blouse, Ladies | SKU: 31092302

**Material**

100% cotton (organic), 115 g/m<sup>2</sup>.

**Washability**

Washable at up to 60°C, tumble dry, can be dry cleaned.

**Colors**

white

**BEVER**

Shirt, Men | SKU: 30061301

**Material**

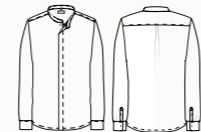
100% cotton (organic), 140 g/m<sup>2</sup>.

**Washability**

Washable at up to 60°C, tumble dry, can be dry cleaned.

**Colors**

white |  greyblue |  black <sup>Ⓢ</sup>



<sup>Ⓢ</sup> Minimum order quantity required. Please inquire.





**LONDON**

**Blouson Jacket, unisex**  
**SKU:** 20062109

**Material**  
 63% polyester (recycled), 34% lyocell and 3% elastolefin, 250 g/m<sup>2</sup>.

**Washability**  
 Easy-care washable at up to 40°C ,  
 tumble dry.

**Colors**  
 ■ black



**LEEDS**

**Overshirt, unisex**  
**SKU:** 20122109

**Material**  
 63% polyester (recycled), 34% lyocell and 3% elastolefin, 250 g/m<sup>2</sup>.

**Washability**  
 Easy-care washable at up to 40°C ,  
 tumble dry.

**Colors**  
 ■ black



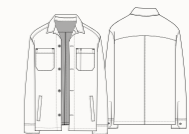
**LIVERPOOL**

**Circular Overshirt, unisex**  
**SKU:** 20122700

**Material**  
 Twill made of 60% cotton (recycled) and 40% polyester (recycled), 280 g/m<sup>2</sup>.

**Washability**  
 Washable at up to 60°C, tumble dry,  
 can be dry cleaned. Not suitable for  
 hot ironing! Wash separately.

**Colors**  
 ■ undyed denim



Minimum order quantity required. Please inquire.



**PISA**

T-Shirt, Ladies | SKU: 45021500

**Material**

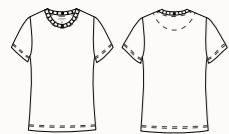
100% cotton (organic), according to GOTS, 165 g/m<sup>2</sup>.

**Washability**

Washable at up to 30°C.

**Colors**

☐ white | ■ navy | ■ black



**FARO**

Longsleeve, Men | SKU: 44042500

**Material**

100% cotton (organic), according to GOTS, 165 g/m<sup>2</sup>.

**Washability**

Washable at up to 30°C.

**Colors**

■ navy | ■ black<sup>④</sup>



**LAGOS**

Longsleeve, Ladies | SKU: 45042500

**Material**

100% cotton (organic), according to GOTS, 165 g/m<sup>2</sup>.

**Washability**

Washable at up to 30°C.

**Colors**

■ navy | ■ black<sup>④</sup>



**PORTO 2.0**

T-Shirt, unisex | SKU: 44021500

**Material**

100% cotton (organic), according to GOTS, 165 g/m<sup>2</sup>.

**Washability**

Washable at up to 30°C.

**Colors**

☐ white | ■ black | ■ navy | ■ mustard



④ Minimum order quantity required. Please inquire.



### CARLTON

Blazer, Men | SKU: 20132109

**Material**

63% polyester (recycled), 34% lyocell and 3% elastolefin, 250 g/m<sup>2</sup>.

**Washability**

Dry cleaning.

**Colors**

■ black



### CAMBRIDGE

Blazer, Ladies | SKU: 21072109

**Material**

63% polyester (recycled), 34% lyocell and 3% elastolefin, 250 g/m<sup>2</sup>.

**Washability**

Dry cleaning.

**Colors**

■ black



④ Minimum order quantity required. Please inquire.

## CHEF & SERVICE TROUSERS



### TURIN

Chino, Men | SKU: 50022102

**Material**

Twill made of 63% polyester (recycled), 34% cotton (organic) and 3% elastolefin, 210 g/m<sup>2</sup>. Sustainably produced cotton/polyester blend from recycled plastic waste.

**Washability**

Washable at up to 70°C, tumble dry, suitable for industrial washing according to DIN EN ISO 15797.

**Colors**

■ black | ■ midnight blue ■ cappuccino



### TOLEDO

Chino, Ladies | SKU: 51022102

**Material**

Twill made of 63% polyester (recycled), 34% cotton (organic) and 3% elastolefin, 210 g/m<sup>2</sup>. Sustainably produced cotton/polyester blend from recycled plastic waste.

**Washability**

Washable at up to 70°C, tumble dry, suitable for industrial washing according to DIN EN ISO 15797.

**Colors**

■ black | ■ midnight blue





## VERONA

**Chino, Ladies | SKU:** 51032108

### Material

Twill made of 63% polyester (recycled), 34% cotton (organic) and 3% elastolefin, 210 g/m<sup>2</sup>. Sustainably produced cotton/polyester blend from recycled plastic waste.

### Washability

Washable at up to 70°C, tumble dry, suitable for industrial washing according to DIN EN ISO 15797.

### Colors

■ cappuccino



## SAPORO

**Working Pants, unisex | SKU:** 50012107

### Material

Twill made of 63% polyester (recycled), 34% cotton and 3% elastolefin, 240 g/m<sup>2</sup>.

### Washability

Washable at up to 70°C, suitable for industrial washing according to DIN EN ISO 15797.

### Colors

□ white





## APRONS

**OSCAR**

Long Bib Apron, unisex | SKU: 12022103

**Material**

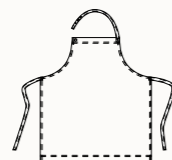
Twill made of 65% polyester and 35% cotton (organic), 240 g/m<sup>2</sup>. The polyester is composed of 40% recycled polyester and 25% polyester SEAQUAL® YARN (contains upcycled marine plastic).

**Washability**

Washable at up to 70°C, tumble dry, suitable for industrial washing according to DIN EN ISO 15797. Not suitable for hot ironing! Wash separately.

**Colors**

ginger | poppy | denim look

**SEAL**

Service Apron, unisex | SKU: 10021103

**Material**

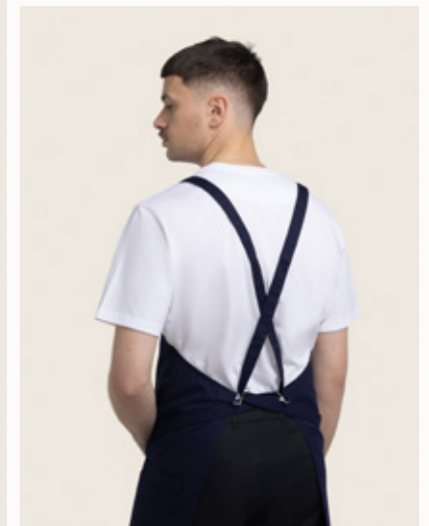
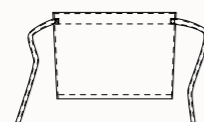
Twill made of 65% polyester and 35% cotton (organic), 240 g/m<sup>2</sup>. The polyester is composed of 40% recycled polyester and 25% polyester SEAQUAL® YARN (contains upcycled marine plastic).

**Washability**

Washable at up to 70°C, tumble dry, suitable for industrial washing according to DIN EN ISO 15797. Not suitable for hot ironing! Wash separately.

**Colors**

ginger | poppy | denim look

**WALU**

Back Binding Bib Apron, unisex | SKU: 12072103

**Material**

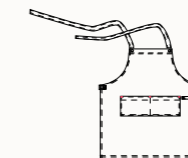
Twill made of 65% polyester and 35% cotton (organic), 240 g/m<sup>2</sup>. The polyester is composed of 40% recycled polyester and 25% polyester SEAQUAL® YARN (contains upcycled marine plastic).

**Washability**

Washable at up to 70°C, tumble dry, suitable for industrial washing according to DIN EN ISO 15797. Not suitable for hot ironing! Wash separately.

**Colors**

black | navy





## PIKE

Long Bib Apron, unisex | SKU: 12012103

### Material

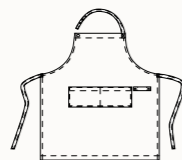
Twill made of 65% polyester and 35% cotton (organic), 240 g/m<sup>2</sup>.  
The polyester is composed of 40% recycled polyester and 25% polyester SEAQUAL® YARN (contains upcycled marine plastic).

### Washability

Washable at up to 70°C, tumble dry, suitable for industrial washing according to DIN EN ISO 15797. Not suitable for hot ironing! Wash separately.

### Colors

■ anthracite | ■ navy | ■ olive | ■ sea green | ■ ginger | ■ black





## PIKE

Circular Long Bib Apron, unisex | SKU: 12012700

### Material

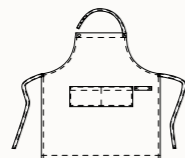
Twill made of 60% cotton (recycled) and 40% polyester (recycled).

### Washability

Washable at up to 60°C, tumble dry, can be dry cleaned.  
Not suitable for hot ironing! Wash separately.

### Colors

■ undyed denim



④ Minimum order quantity required.  
Please inquire.



### TUNA

Short Bib Apron, unisex  
SKU: 12011103

#### Material

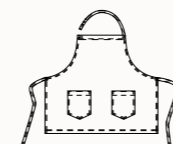
Twill made of 65% polyester and 35% cotton (organic), 240 g/m<sup>2</sup>. The polyester is composed of 40% recycled polyester and 25% polyester SEAQUAL® YARN (contains upcycled marine plastic).

#### Washability

Washable at up to 70°C, tumble dry, suitable for industrial washing according to DIN EN ISO 15797. Not suitable for hot ironing! Wash separately.

#### Colors

■ black | ■ navy | ■ olive



### COBIA

Bar Apron, unisex  
SKU: 10012103

#### Material

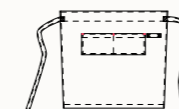
Twill made of 65% polyester and 35% cotton (organic), 240 g/m<sup>2</sup>. The polyester is composed of 40% recycled polyester and 25% polyester SEAQUAL® YARN (contains upcycled marine plastic).

#### Washability

Washable at up to 70°C, tumble dry, suitable for industrial washing according to DIN EN ISO 15797. Not suitable for hot ironing! Wash separately.

#### Colors

■ black | ■ navy | ■ olive



### DORADO

Service Apron, unisex  
SKU: 10011103

#### Material

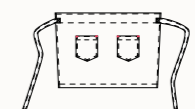
Twill made of 65% polyester and 35% cotton (organic), 240 g/m<sup>2</sup>. The polyester is composed of 40% recycled polyester and 25% polyester SEAQUAL® YARN (contains upcycled marine plastic).

#### Washability

Washable at up to 70°C, tumble dry, suitable for industrial washing according to DIN EN ISO 15797. Not suitable for hot ironing! Wash separately.

#### Colors

■ black | ■ navy | ■ olive





### THE BIG 1

Back Binding Bib Apron, unisex | SKU: 12093200

#### Material

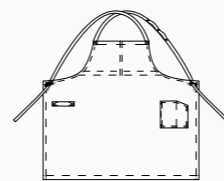
Denim made of 100% cotton (organic) according to GOTS, 308 g/m<sup>2</sup>. Cotton (organic) from farmers' cooperatives in Uganda and Kyrgyzstan.

#### Washability

Washable at up to 40°C. Not suitable for hot ironing! Wash separately.

#### Colors

■ denim grey



### THE BIG 2

Long Bib Apron, unisex | SKU: 12053200

#### Material

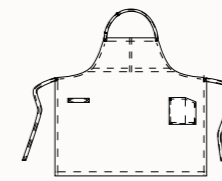
Denim made of 100% cotton (organic) according to GOTS, 308 g/m<sup>2</sup>. Cotton (organic) from farmers' cooperatives in Uganda and Kyrgyzstan.

#### Washability

Washable at up to 40°C. Not suitable for hot ironing! Wash separately.

#### Colors

■ denim grey





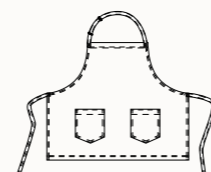
### SALT&PEPPER

Short Bib Apron, unisex  
SKU: 12051450

**Material**  
100% cotton (organic),  
according to GOTS 240 g/m<sup>2</sup>.

**Washability**  
Washable at up to 60°C, suitable  
for tumble dryer. Not suitable for hot  
ironing! Wash separately.

**Colors**  
■ grey melange



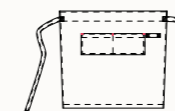
### SALT&PEPPER

Bar Apron, unisex  
SKU: 10012450

**Material**  
100% cotton (organic),  
according to GOTS 240 g/m<sup>2</sup>.

**Washability**  
Washable at up to 60°C, suitable  
for tumble dryer. Not suitable for hot  
ironing! Wash separately.

**Colors**  
■ grey melange



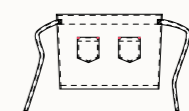
### SALT&PEPPER

Service Apron, unisex  
SKU: 10011450

**Material**  
100% cotton (organic),  
according to GOTS 240 g/m<sup>2</sup>.

**Washability**  
Washable at up to 60°C, suitable  
for tumble dryer. Not suitable for hot  
ironing! Wash separately.

**Colors**  
■ grey melange





### SALT&PEPPER BLANC

Long Bib Apron, unisex | SKU: 12064450-981-00

#### Material

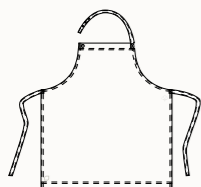
100% cotton (organic), according to GOTS, 240 g/m<sup>2</sup>.

#### Washability

Washable at up to 60°C, tumble dry. Not suitable for hot ironing! Wash separately.

#### Colors

■ grey melange



### SALT&PEPPER

Long Bib Apron, unisex | SKU: 12052450

#### Material

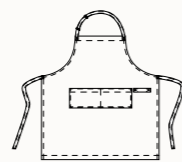
100% cotton (organic), according GOTS, 240 g/m<sup>2</sup>.

#### Washability

Washable at up to 60°C, tumble dry. Not suitable for hot ironing! Wash separately.

#### Colors

■ grey melange





## KOPENHAGEN

Long Bib Apron, unisex | SKU: 12052200

### Material

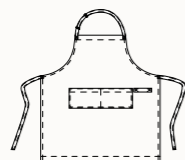
Denim-look twill made of 100% cotton (organic) from organic farming according to GOTS, 308 g/m<sup>2</sup>. Cotton (organic) from farmers' cooperatives in Uganda and Kyrgyzstan.

### Washability

Washable at up to 40°C. Not suitable for hot ironing! Wash separately.

### Colors

■ denim black



## BERN

Short Bib Apron, unisex  
SKU: 12051200

### Material

Denim made of 98% cotton (organic) from organic farming and 2% elastane, 360 g/m<sup>2</sup>.

### Washability

Washable at up to 40°C. Not suitable for hot ironing! Wash separately.

### Colors

■ denim black



## DENVER

Bar Apron, unisex  
SKU: 10012200

### Material

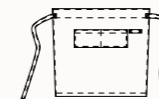
Denim made of 98% cotton (organic) from organic farming and 2% elastane.

### Washability

Washable at up to 40°C. Not suitable for hot ironing! Wash separately.

### Colors

■ denim blue | ■ denim grey



## DUBLIN

Service Apron, unisex  
SKU: 10011200

### Material

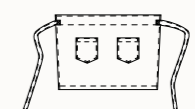
Denim made of 98% cotton (organic) from organic farming and 2% elastane.

### Washability

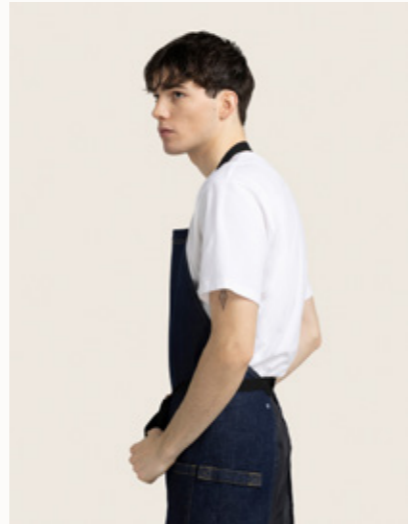
Washable at up to 40°C. Not suitable for hot ironing! Wash separately.

### Colors

■ denim blue | ■ denim grey  
■ denim black







## MALMÖ

Long Bib Apron, unisex | SKU: 12052990-550-00

### Material

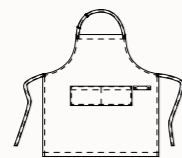
Blue denim made of 67% cotton, of which 21% pre-consumer recycled denim, 9% post-consumer recycled denim, 2% pre-consumer recycled polyester and 1% elastane, 370 g / m<sup>2</sup>, pre-washed.

### Washability

Washable at up to 40°C, tumble dry. Not suitable for hot ironing! Wash separately.

### Colors

■ denim blue



## OVEN

Long Bib Apron, unisex | SKU: 1205220

### Material

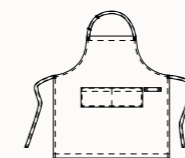
100% cotton (organic) according to GOTS, 280 g/m<sup>2</sup>, from farmers' cooperatives in Uganda and Kyrgyzstan.

### Washability

To preserve the bright colours, we recommend gentle washing at 60°C with mild detergent, suitable for tumble-drying. Not suitable for hot ironing! Wash separately.

### Colors

■ safran | ■ pigeon blue | ■ vitelotte



# HEADWEAR



## ALBA

Beanie, unisex | SKU: 72011100-580

### Material

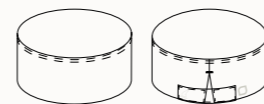
Twill made of 63% polyester (recycled) and 35% cotton (organic), 210 g/m<sup>2</sup> and 2% polyester. Sustainably produced polyester with recycled plastic waste from the ocean.

### Washability

Washable at up to 70°C, tumble dry, suitable for industrial washing according to DIN EN ISO 15797.

### Colors

■ midnight blue



## COLOGNE

Cap, unisex | SKU: 72030504

### Material

Canvas weave made of 100% cotton (organic), 280 g/m<sup>2</sup>.

### Washability

Not washable.

### Colors

■ black | ■ swamp



## MEDICINE & CARE



### KALUGA

Tunic, unisex | SKU: 42014104

#### Material

Twill made of 50% recycled polyester and 50% lyocell, 185 g/m<sup>2</sup>. The polyester is composed of 30% recycled polyester and 20% polyester SEAQUAL® YARN (contains upcycled marine plastic).

#### Washability

Washable at up to 70°C, tumble dry and can be dry cleaned.

#### Colors

white |  anthracite |  navy |  red



### SAPORO

Working Pants, unisex | SKU: 50012107

#### Material

Twill made of 63% recycled polyester, 34% cotton and 3% elastofine, 240 g/m<sup>2</sup>.

#### Washability

Washable at up to 70°C, suitable for industrial washing according to DIN EN ISO 15797.

#### Colors

white



④ Minimum order quantity required. Please inquire.



**KAYA&KATO**



**MAX STROHE**

A fusion of creativity, design, and sustainability:

**THE MAX STROHE COLLECTION.**

Kitchen & streetwear at the highest level.

He is creative, socially engaged, and a culinary genius: Berlin-based Michelin-star chef Max Strohe, known from TV shows like Kitchen Impossible, was awarded the Federal Cross of Merit for his initiative „Cooking for Heroes“ during the pandemic. Together with Max, we’ve created a collection for all gourmets – both in and out of the kitchen.



**LOTREK SHELLCHIC**

T-Shirt, unisex | SKU: 44051502-119

**Material**  
100% cotton (organic) GOTS certified, 200 g/m<sup>2</sup>.

**Washability**  
Washable up to 30°C. Wash with similar colors. Wash and iron inside out.

**Colors**  
☐ off white with front- and backprint



**LOTREK UMAMI**

T-Shirt, unisex | SKU: 44051502-461

**Material**  
100% cotton (organic) GOTS certified, 200 g/m<sup>2</sup>.

**Washability**  
Washable up to 30°C. Wash with similar colors. Wash and iron inside out.

**Colors**  
■ swamp with front- and backprint



**LOTREK EGGCELLENT**

T-Shirt, unisex | SKU: 44051502-545

**Material**  
100% cotton (organic) GOTS certified, 200 g/m<sup>2</sup>.

**Washability**  
Washable up to 30°C. Wash with similar colors. Wash and iron inside out.

**Colors**  
■ teal with front- and backprint





**XBERG**

Sweatshirt, unisex | SKU: 46021503

**Material**

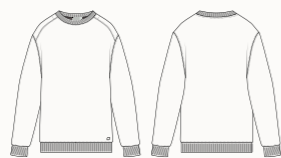
100% cotton (organic) according to GOTS, 385 g/m<sup>2</sup>.

**Washability**

Machine washable at up to 30°C.

**Colors**

■ black | ■ rose blush



**MAX**

Cap, unisex | SKU: 72031504

**Material**

With front- and backprint

**Washability**

Not washable.

**Colors**

■ black | ■ swamp





## STROHE

**Chef Jacket, unisex | SKU: 20152100**

### Material

Twill made of 65% polyester and 35% cotton (organic), 210 g/m<sup>2</sup>. The polyester is composed of 40% recycled polyester and 25% polyester SEAQUAL® YARN (contains upcycled marine plastic).

### Washability

Machine washable up to 70°C. Suitable for tumble drying. Suitable for industrial washing according to DIN EN ISO 15797.

### Colors

white / sea green



## TULUS

**Back Binding Bib Apron, unisex | SKU: 12182103**

### Material

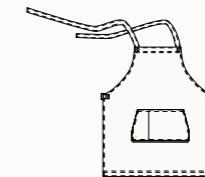
Twill made of 65% polyester and 35% cotton (organic), 240 g/m<sup>2</sup>. The polyester is composed of 40% recycled polyester and 25% polyester SEAQUAL® YARN (contains upcycled marine plastic).

### Washability

Machine washable up to 70°C. Dryer safe. Suitable for industrial washing according to DIN EN ISO 15797. Wash separately. Not suitable for rotary ironing.

### Colors

sea green





**WESTSIDE**

Working Pants, Men | SKU: 50062109

**Material**

Twill made of 63% polyester (recycled), 34% lyocell and 3% elastolefin, 250 g/m<sup>2</sup>.

**Washability**

Washable up to 70°C. Suitable for tumble drying. Suitable for industrial washing according to DIN EN ISO 15797.

**Colors**

■ black



**EASTSIDE**

Working Pants, Ladies | SKU: 51062109

**Material**

Twill made of 63% polyester (recycled), 34% lyocell and 3% elastolefin, 250 g/m<sup>2</sup>.

**Washability**

Washable up to 70°C. Suitable for tumble drying. Suitable for industrial washing according to DIN EN ISO 15797.

**Colors**

■ black







---

Wolfsstraße 16  
50667 Köln

**WEBSITE**  
[kaya-kato.de](http://kaya-kato.de)

**E-MAIL**  
[info@kaya-kato.de](mailto:info@kaya-kato.de)

**PHONE**  
+49 221 998891 00

**INSTAGRAM**  
[@kayaandkato](https://www.instagram.com/kayaandkato)

**FACEBOOK**  
[@kayaandkato](https://www.facebook.com/kayaandkato)